



Bar|Scan[®] Asset Management

Instructions to Upgrade to Bar|Scan[®] Version 3.0.0

POST: Bar|Scan, Inc.
4607 Lakeview Canyon Road, Suite 596
Westlake Village, CA 91361-4028
USA

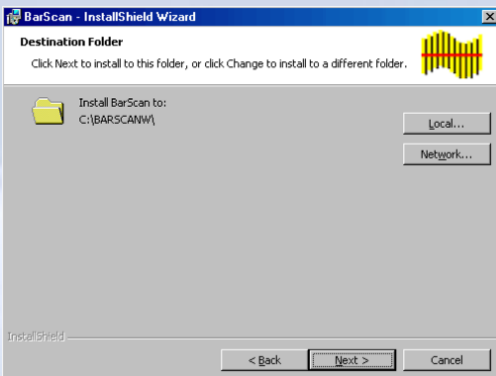
US TEL (805) 777-0079
US FAX (805) 777-0054
INTERNET <http://www.barscan.com>
EMAIL techsupport@barscan.com

Upgrade Instructions—You will need local admin rights to perform this upgrade.

Enclosed are two CDs labeled “**3.0.0 Upgrade**” which contain the latest version of Bar|Scan version 3.0.0 March 8, 2016. These instructions assume that you are currently using Bar|Scan version 2.9.1 or greater. If you are not using 2.9., you will also need to install the Bar|Scan Workstation.

Before installing, make sure that all other users are logged out of Bar|Scan and all ODBC linking (to web sites, etc.) is disabled. It is not necessary to uninstall the previous Bar|Scan program or uninstall the previous Bar|Scan Workstation program.

You will navigate to your current installation and install the upgrade to the SAME location as your current Bar|Scan software. Insert **CD 1** and Select “Install Bar|Scan”. When you see the following screen:



Select “Local” is you are using drive mapping or “Network” if you are not. Next, browse to your current *barscanw* folder and continue with the default prompts.

When completed, you will be required to perform a Table Integrity. These items can be found on the Table Integrity Screen. To open the Screen, from the Bar|Scan Main Menu select File -> Company-> Housekeeping-> Table Integrity. During the Table Integrity, you may be prompted to allow Bar|Scan to create new Tables, respond YES.

When you are completed with the upgrade, verify the version number on the Bar|Scan Sign On Screen, it should display Version 3.0.0.

If you are using Windows Mobile or Windows CE handhelds, **CD 2** contains the latest Bar|Scan Program version 1.0.9.0 for your device.

This upgrade is recommended and complete install instructions can be provided. For Windows CE Handhelds other than MC3200 this upgrade requires that an SD Card be installed. More information is contained on CD1 folder ‘User Manual’. Please email for instructions to techsupport@barscan.com

IMPORTANT Note for Network Users: If your previous version was older than 2.9.1, you DO need to install the Bar|Scan Workstation program on every PC accessing Bar|Scan.

